

TASKMASTER® 8500D

Powerful High-Flow Duplex Grinders

The TASKMASTER TM8500D is a rugged grinder for open channels, sewage plant headworks, wet wells, pump stations and more.

The TASKMASTER TM8500D features two sets of dual shaft grinders powered by a single motor and drive. This duplex TASKMASTER is designed for 100% performance. It delivers active grinding across the entire unit width and high capacities without the need for any auxiliary solids diverter components. The result is a true size reduction powerhouse.

High-Flow Capability

Cutter Cartridge Technology

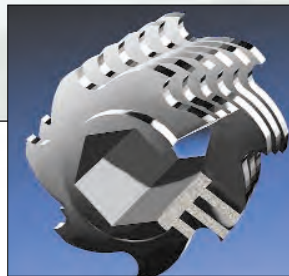
Low Wear and Maintenance

Double the Cutting Area

No Stack Retightening

Advantages:

The TASKMASTER TM8500D has twice the active cutting area of any competing model and can handle more work with shorter cutter stacks.. Additionally, this unit eliminates the elements in competing designs most prone to maintenance problems. This TASKMASTER is also ultra-compact and will easily retrofit into tight locations.



Cutter Cartridge Technology:

The TASKMASTER TM8500D features Monolithic Cutter Cartridge technology. With this design break-thru, each one-piece cutter cartridge replaces twelve individual cutter or spacer disks found on all other units. The result is the TASKMASTER has greatly enhanced unit strength, less parts and requires less maintenance than any other unit available.



TASKMASTER 8500 DUPLEX - GRINDERS

**Franklin
Miller** THE SIZE
REDUCTION
SPECIALISTS

(973) 535-9200 • Fax (973) 535-6269

Construction:

TASKMASTER Duplex Grinders are made with the industry's finest materials and craftsmanship. Standard cutters are supplied in heat treated 4140 alloy steel. The cutters are optionally available in hardened stainless steel. Fully stainless steel construction is also available. The unit's 4140 steel shafts and gears are hardened and ground for precision and long life. Heavy, oversized, planetary gear drives are used for dependable service. The TM8500D is supplied with a highly reliable mechanical seal system, which are housed in convenient cartridges.

S260 Control System

An S260 Control System monitors unit operation and automatically cycles the grinder in case of an overload condition. This U.L. listed industrial control panel is supplied complete with circuit breaker, a NEMA 4X FRP enclosure, self-test function, and 100,000 hour life LED indicators.



Options

- Extended Drive Shafts
- Channel Frames
- Guide Rail Systems
- Wet Well Frames
- Hydraulic Drives
- Submersible Motors
- Stainless Steel Construction



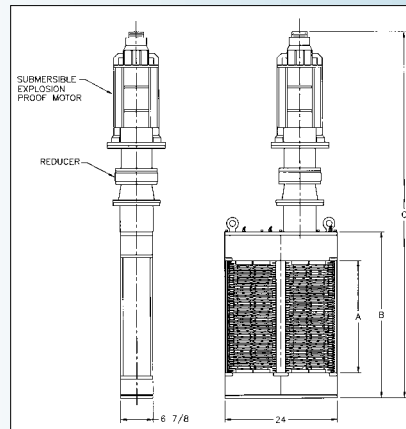
Requiring little space, the TM8500D easily fits into an open channel and provides twice the grinding action.



A unique, pressure-balanced center post allows the flow to pass freely and optimizes performance.

Configurations:

Mount the TM8500D vertically or horizontally or at any angle—it doesn't matter. The unit can be supplied with standard



TEFC or explosion-proof electric motors, our exclusive dry running, submersible explosion-proof motors, or hydraulic drives. The TM8500D is supplied complete with a variety of auxiliary frames, rails, and adaptors to

meet most installation requirements. It can also be supplied with hoppers and stands for horizontal gravity-fed applications.

MODEL NO.	A	B	C	HP	WEIGHT	GPM/ls
TM8512	12.9 (328mm)	21.7 (552mm)	50.3 (1278mm)	3	712 (324kg)	1111 (70ls)
TM8516	16.6 (422mm)	25.4 (646mm)	54.0 (1372mm)	3	767 (349kg)	1546 (98ls)
TM8524	24.1 (612mm)	32.9 (837mm)	61.5 (1562mm)	3	878 (399kg)	2429 (153ls)
TM8532	31.6 (803mm)	40.4 (1027mm)	69.0 (1753mm)	3	988 (444kg)	3311 (209ls)
TM8540	39.1 (993mm)	47.9 (1218mm)	76.5 (1943mm)	3	1099 (499kg)	4194 (265ls)
TM8552	50.3 (1278mm)	59.1 (1502mm)	90.9 (2308mm)	5	1346 (612kg)	5512 (347ls)
TM8560	57.8 (1468mm)	66.6 (1693mm)	98.4 (2499mm)	5	1457 (662kg)	6395 (403ls)

For inline dimensions please contact factory.

Call one of our customer service representatives to discuss your particular application.