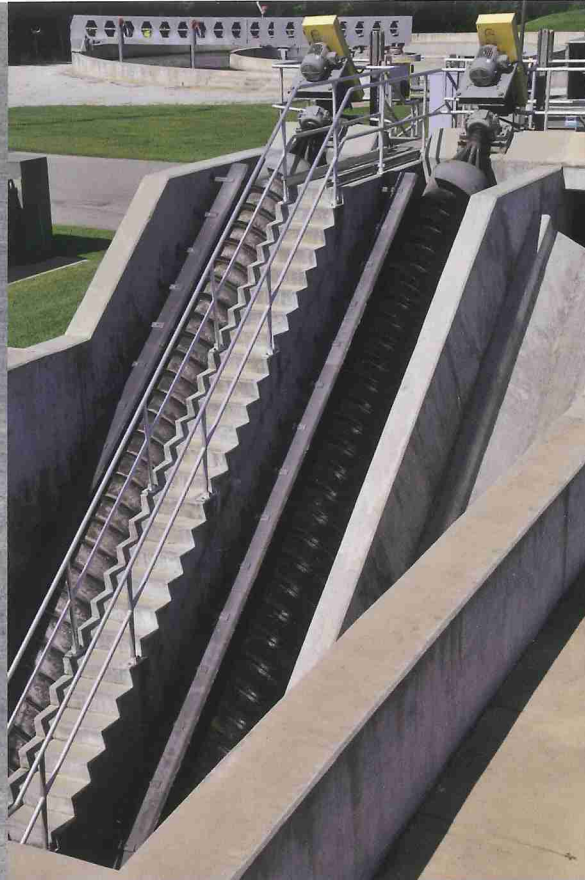


SCHREIBER[®] ScrewPumps



Schreiber incorporates the Archimedean Screw Pump concept in both the Open Flight Screw Pump & the Tube Mounted Screw Pump.

Schreiber incorporates the Archimedean Screw Pump concept in both the Open Flight Screw Pump and the Tube Mounted Screw Pump (available in variable angle and stationary angle). This concept provides variable capacity at a constant speed up to its design maximum.

The key to Schreiber's screw pump success is our superior lower bearing design. Schreiber's screw pumps utilize a unique single row spherical roller, self-aligning, combination radial / thrust lower support bearing with a minimum L-10 life of 100,000 hours. The lubrication system is positive, simple, reliable, and low in operating cost. A transparent oil reservoir is located above the maximum operating water level. This maintains an internal positive head against the bearing face seal at all times. The design of the bearing housing prevents contaminants from entering the bearing. In the event of accidental oil loss, a float switch in the oil reservoir will shut down the pump in order to protect the bearing. Schreiber's gravity lubrication system provides simple, reliable operation without elaborate pressurized grease systems and their inherent operational concerns. A simple pillow block or flanged bearing provides radial support at the upper shaft.

OPEN FLIGHT SCREW PUMP

The Open Flight Screw Pump (OFSP) transports liquid utilizing a concrete trough. Truly a non-clog pump, the OFSP is typically installed at a 30 or 38 degree angle of inclination. The pump has a variable capacity at a constant speed up to its maximum.

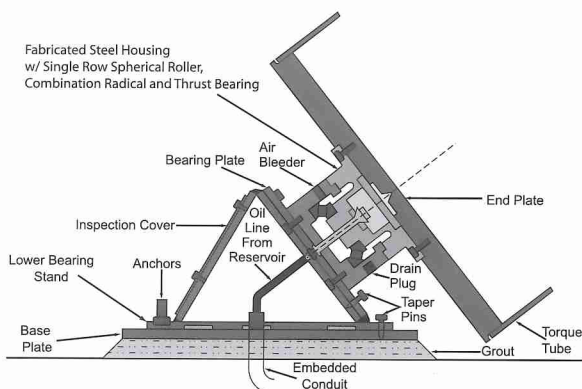
TUBE MOUNTED SCREW PUMP

The Tube Mounted Screw Pump (TMSP) transports liquid inside a stationary tube, simplifying structure design and eliminating the need for grouting. The units are completely factory assembled, which minimizes installation costs. Pumps can be set at a fixed angle or the lower end can be supported by a hoist to vary the pump angle to change the pumping rate or for maintenance access.

CORROSION PROTECTION

The screw and outer tube of a Schreiber Screw Pump are fabricated steel and hot-dip galvanized or epoxy coated, stainless construction is also available. The resulting product has a high corrosion-resistance for a long service life.

LOWER BEARING ASSEMBLY
 (Open Flight Screw Pump)



Schreiber's unique lower bearing design is used on all Schreiber screw pumps.

OPEN FLIGHT SCREW PUMP



Open Flight Screw Pumps with sizes from 20" to 108" in diameter. Lift capability up to 30'.

TUBE MOUNTED SCREW PUMP



Tube Mounted Screw Pumps with a stationary outer shell eliminate the need for a precisely grouted concrete channel. Available with fixed or variable angle of inclination for control of pumping rates. Sizes from 20" to 72" in diameter. Lift capability up to 25'.